

REPAIR & MAINTENANCE | Cutter CU 3005 / 4005 (C) / 4007 (C) |

Maintenance recommendations cutter:

after use (every time)

- **Wear full protective gear during maintenance.**
- **Always act according to the safety instructions as supplied with each tool!**



Step 1

- Check that the blades are opened 5 mm.
- Check general condition of the cutter (clean/dry of the tool with a soft cloth).
- Lightly oil steel parts with preservative oil WD-40 before



Step 2

- Check coupler(s) and dust cap(s) for damage, dirt and/or oil leakage
- Clean coupler(s) with a clean and soft cloth, if necessary with water and soap.
- If necessary grease with hydraulic oil or use WD-40.
- Check functioning coupler(s).
- Reconnect loose dust cap(s) to coupler(s).



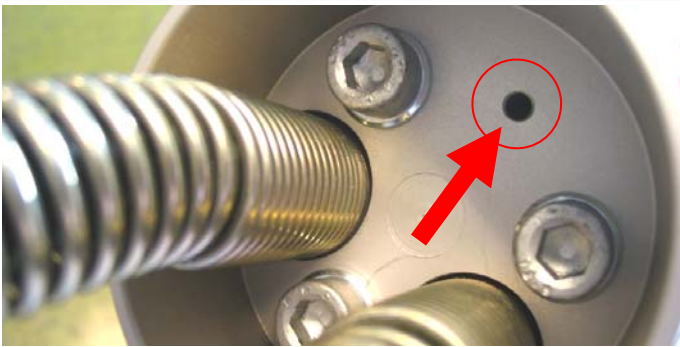
Step 3

- Check the snap ring of the hinge pin for damage.
Replace if:
 - damaged
 - corroded
 - worn down



Step 4

- Check the functioning of the tumbler switch, it must automatically return into its neutral position.



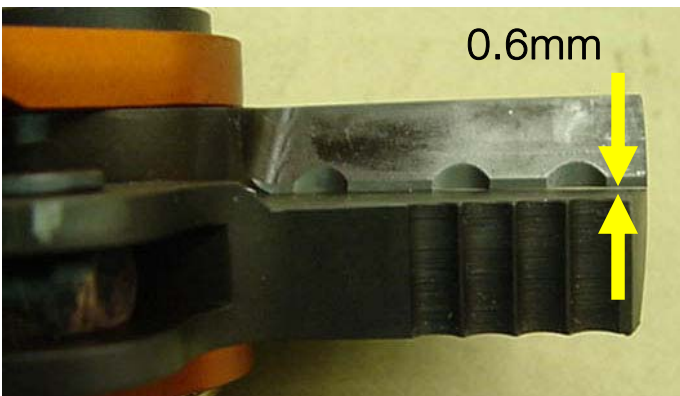
Step 5 (DUAL)

- Check the back of the tool for oil, this will indicate that the safety valve has been activated during use.
- Clean the control handle internally by blowing compressed air in the back of the handle.



Step 5 (CORE)

- Check the back of the tool for oil, this will indicate that the safety valve has been activated during use.
- Clean the control handle internally by blowing compressed air in the back of the handle.



Step 7

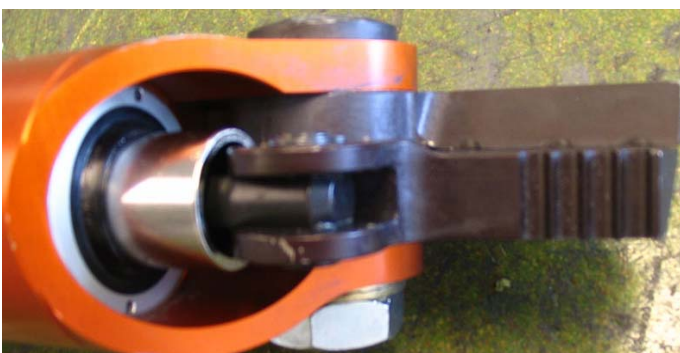
- Check the blades for damage, blades need to be replaced when:
- 1st tooth from cutting recess is missing.
 - 2 or more teeth are missing.
 - tips recede more than 0.6mm.
 - overlap of the cutting face is less than 2mm

Contact the Holmatro dealer to replace the blades.



Step 8

- When the cutter is heavily used, set the torque of the bolts.
- main bolt = 100 Nm. (cap size 32).



Step 9

- Spray Teflon lubricating oil on and between the moving parts such as:
 - main bolt.
 - hinge pin.
 - lever.
 - blades.
 - blade holder.

Note: open and close the blades while spraying.

REPAIR & MAINTENANCE | Cutter CU 3005 / 4005 (C) / 4007 (C) |

Maintenance recommendations:

Monthly (or after 10 hours of use)

(Should be carried out by a technician)

- **Wear full protective gear during maintenance !**
- **Always act according to the safety instructions as supplied with each tool!**

Necessary equipment: Torque wrench, cap size 30/32, Teflon lubricating oil, soft cloth

Repeat step 1- 9



Step 10

- Check the operation of the cutter by opening & closing the cutter 2 times.
- Check: - whether the blades move smoothly.
- no cracking sound can be heard.



Step 11 (CU 3005 /4005/ 4007 only!)

- Check pigtail hoses and mounting of the couplers. Replace the pigtail hose when:
 - damaged
 - the steel wire inlayer is visible
 - blisters are visible.
 - obvious traces of kinks are visible.
 - cuts are visible.
 - protection spring is not mounted well.
 - traces of damage due to chemicals/heat
 - older than 10 year

Note: Always reject rubber hoses older than 10 years, even when undamaged