

ELSEMA PTY LTD

31 Tarlington Place
Smithfield NSW 2164 Australia

P 02 9609 4668 **F** 02 9725 2663

W www.elsema.com

6th Edition

Double & Single Gate Controller with Eclipse[®] Operating System (EOS)

Eclipse[®]
MC



MC : Controller for Double and Single Gates
Setup and Technical Information
Includes latest Intelligent Technology

ELSEMA 
GATE & DOOR CONTROLS
www.elsema.com



Important warning and safety instructions

All installations and testing must be done only after reading and understanding all instructions carefully. All wiring should be done only by trained technical personnel. Failing to follow instructions and the safety warnings may result in serious injury and/or damage to property.

Elsema Pty Ltd shall not be liable for any injury, damage, cost, expense or any claim whatsoever to any person or property which may result from improper use or installation of this product.

Risk in the goods purchased shall unless otherwise agreed in written pass to the buyer upon delivery of the goods.

Any figures or estimates given for performance of goods are based upon the company's experience and is what the company obtains on tests. The company will not accept liability for failure to comply with the figures or estimates due to the nature of variable conditions affecting for example Radio Remote Controls.

Please keep this setup instruction for future reference.



Installed by: _____

Service date: _____

Index

Features	4	- Press and Hold on Open & Close Inputs..23
Description.....	4	- Window and Louvre Mode
Part Number.....	5	Menu 8 – Leaf Delay
Menu Structure	6-7	- Open Leaf Delay
Connection Diagram	8	- Close Leaf Delay
Setup Instructions	9	- Close Leaf Delay on Mid Open.....
Limit Switches.....	10	Menu 9 – Motor 1 Obstruction
Setup i-Learning Steps.....	11	Detect Margins.....
Menu 1 – Auto Close	12	- Margin Example
- Normal Auto Close.....	12	Menu 10 – Motor 2 Obstruction
- Auto Close with Photoelectric Trigger	12	Detect Margins.....
- Auto Close after an Open Obstruction	12	- Margin Example
- Auto Close after Power Restored.....	13	Menu 11 – Motor Speed, Slow Speed
- Normal Auto Close on		Area and Reverse Time.....
Sequential Obstructions	13	- Open and Close Speed.....
- Auto Close Only when		- Slow Speed
Fully Opened.....	13	- Slow Speed Area
- Auto Close Only at Night.....	13	- Obstruction Stop Reverse Delay Time
Menu 2 – Pedestrian Access Features	13-14	Menu 12 – Anti-Jam, Electronic Braking and
Menu 3 – Input Functions.....	14	Open/Close Obstruction Operation
Menu 4 – Photoelectric Beam	15	Menu 13 – i-Learning
Menu 5 – Relay Output Functions.....	16	Menu 14 – Password.....
- Lock/Brake Output.....	17	Menu 15 – Operational Records.....
- Courtesy Light.....	17	- Event History.....
- Service Call Output.....	18	- Displays Gates/Doors Operations
- Strobe or Warning Light.....	18	and Current Levels.....
Menu 6.1 – Lock/Brake Output Modes.....	19	Menu 16 – Tools.....
- Open Lock/Brake Activation	19	- Number of Motors.....
- Close Lock/Brake Activation.....	19	- Set the Supply Voltage
- Open Pre-Lock/Brake Activation.....	19	- Resets Controller & Test Inputs.....
- Close Pre-Lock/Brake Activation.....	19	- Travel Timer for Slip Clutch Motors.....
Menu 6.2 – Courtesy Light Output Mode.....	20	- Solar Mode and Fuse Type.....
Menu 6.3 – Strobe (Warning)		- Day and Night Sensitivity Adjustment
Light Output Mode.....	20	- Slow Speed Ramp Down Time
- Pre-Open Strobe Light Activation.....	20	Accessories.....
- Pre-Close Strobe Light Activation.....	20	- Battery Charger and Solar Applications....
Menu 6.4 – Service Call Output Mode	21	- Backup Batteries.....
Menu 7 – Special Features.....	22	- Keyring Remotes & Photoelectric Beams
- Remote Control Open Only.....	22	- Strobe Lights.....
- Holiday Mode.....	22	
- Energy Saving Mode.....	22	
- Automatic Stop / Open on Closing.....	23	
- Receiver Channel 2 Options	23	

Features

- › Suitable for swing and sliding gates
- › Double or single motor operation
- › Eclipse Operating System (EOS)
- › Day and night sensor (DNS)
- › 24 or 12 Volt DC motor operation
- › Motor soft start and soft stop
- › Speed and force adjustment
- › Large 4-line LCD to indicate controllers status and setup instructions
- › 1-Touch control for easy setup
- › Auto profiling using latest intelligent technology
- › Various inputs, push button, open only, close only, stop, pedestrian and photoelectric beam
- › Supports limit switch inputs or mechanical stops
- › Adjustable auto close, obstruction load and pedestrian access
- › Adjustable lock and courtesy light outputs
- › Variable photoelectric safety beam functions
- › Built-in Penta Receiver
- › Energy saving mode to reduce running costs
- › 12 and 24 Volt DC Output to power accessories
- › Service counters, password protection, holiday mode and many more features
- › Built in 12 and 24 Volt battery charger for backup batteries
- › 12mA standby current making it ideal for solar gates.

Description

Are you ready for the Eclipse? The MC's Eclipse operating system is a user friendly menu driven system that uses the 1-touch button to control, setup and run automatic gates, doors and barriers. It uses a large 4-line LCD screen showing live reading of the motor performance and status of all inputs and outputs.

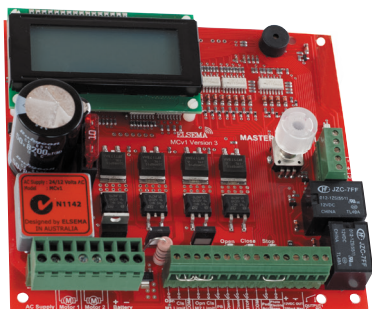
The MC controller is not just the next generation but the industry game changer. We wanted to create a controller that is simple to use and does just about any feature required in the gate and door industry. The MC is not just the next generation but the "Next Transformation" in the gate and door industry creating an Eclipse over previously developed motor controllers.

This new intelligent motor controller is the best match for your automatic gate or door motors.

The intelligent controller was built from the ground up, based on customer feedback and using today's technology. With its rich functions, consumer friendly price and with the focus during development being ease of use and setup makes this controller the ultimate board to control your motors.

Elsema's easy options to add remote controls or any type of photoelectric beams makes for a very user friendly approach, while avoiding the lockdown approach to accessories.

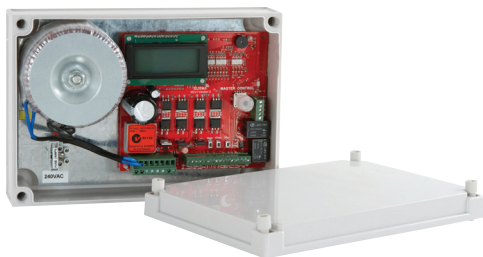
The control cards are available with an IP66 rated plastic enclosure for outdoor installations, backup batteries with charger or the card only. The MC is also suitable for solar gates with its low standby current of 12mA.



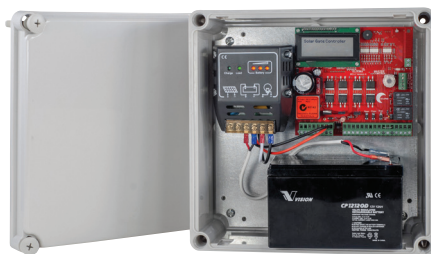
MC



MC24E2



MC24E or MC12E



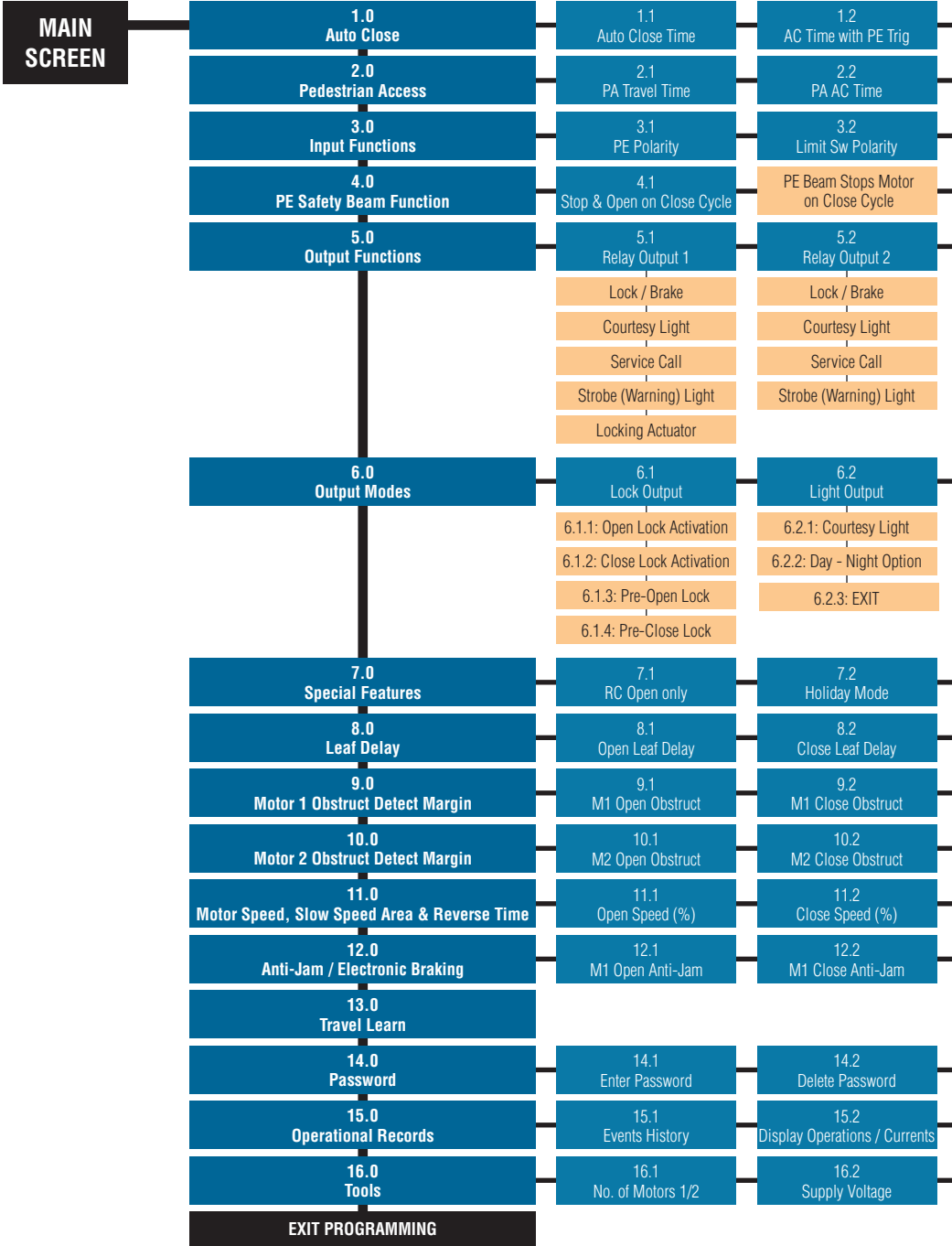
Solar24 or Solar12

Part Number:

Part No.	Contents	Part No.	Contents
MC	Double or single gate and door controller for 24 / 12 Volt motor, card only		
MC24E	Double or single controller for 24 Volt motors includes IP66 rated plastic enclosure and transformer	MC12E	Double or single controller for 12 Volt motors includes IP66 rated plastic enclosure and transformer
MC24E2	Same as MC24E plus 24 Volt 2.6Ah backup battery	MC12E2	Same as MC12E plus 12 Volt 2.6Ah backup battery
MC24E7	Same as MC24E plus 24 Volt 7.0Ah backup battery	MC12E7	Same as MC12E plus 12 Volt 7.0Ah backup battery
MC24E12	Same as MC24E plus 24 Volt 12.0Ah backup battery	MC12E12	Same as MC12E plus 12 Volt 12.0Ah backup battery
Solar Gates			
Solar24	Solar kit for double or single gates, includes intelligent solar charger & 24 Volt 12.0Ah backup battery	Solar12	Solar kit for double or single gates, includes intelligent solar charger & 12 Volt 12.0Ah backup battery
SP20*	20 Watt solar panel	SP40*	40 Watt solar panel

Menu Structure

Press Master Control for 2 seconds to enter the menu structure



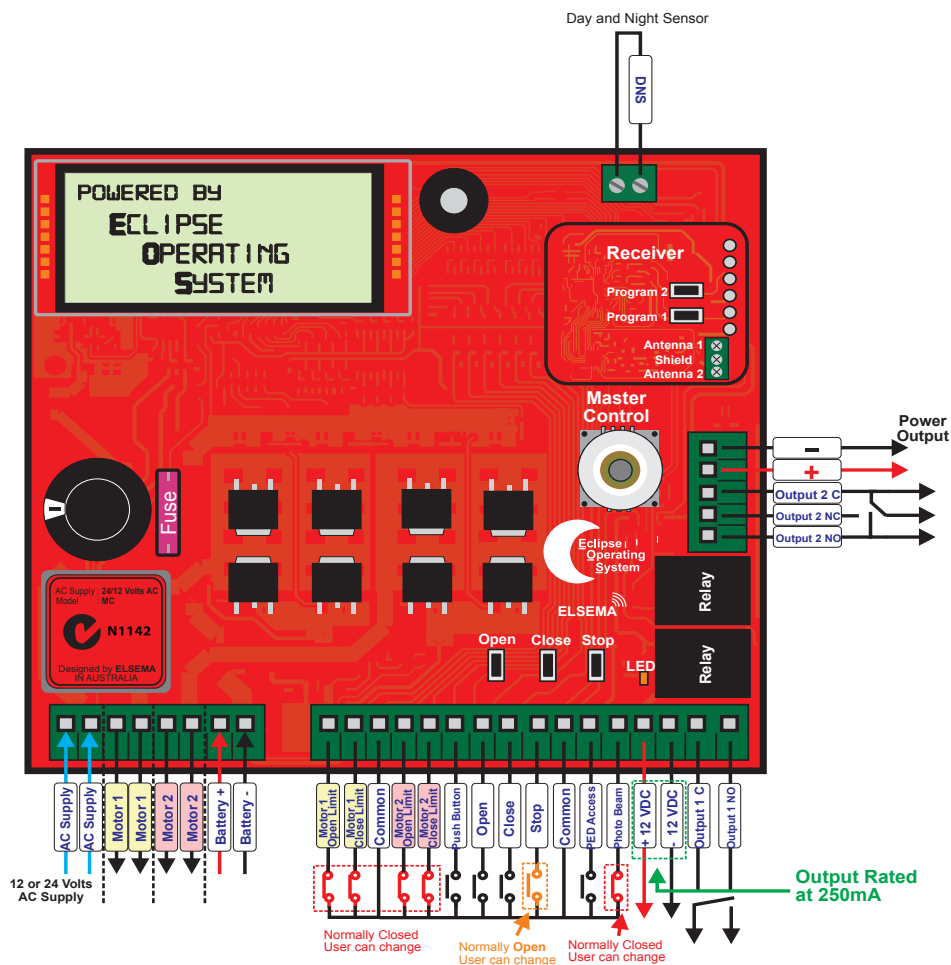
1.3 AC After Open Obstruct	1.4 AC After Power Restored	1.5 AC on Seq. Obstruct	1.6 AC Only When Fully Open	1.7 AC Only at Night
2.3 PA AC Time with PE Trig	2.4 PA AC on Seq. Obstruct	2.5 PA Hold Gate	2.6 EXIT	1.8 EXIT
3.3 Stop Input Polarity	3.4 Auxiliary Input	3.5 EXIT		
PE Beam Stops Motor on Open & Close Cycle	PE Beam Stops Motor and Closes Gate on Open Cycle	4.2 EXIT		
5.3 EXIT				

6.3 Strobe (Warning) Light	6.4 Service Call	6.5 Locking Actuator	6.6 EXIT
6.3.1: Pre-Open Warning Light	6.4.1: Service Counters	6.5.1: Pre-Open Lock	
6.3.2: Pre-Close Warning Light	6.4.2: EXIT	6.5.2: Post-Close Lock	
6.3.3: EXIT		6.5.3: EXIT	

7.3 Energy Saving	7.4 Automatic Stop/Open on Closing	7.5 Receiver Channel 2 Options	7.6 Press and Hold, Open Input	7.7 Press and Hold, Close Input
8.3 Close Leaf Delay on Mid Open	8.4 EXIT			7.8 Window / Louvre Mode
9.3 M1 Slow Speed Obstruct	9.4 M1 Obstruct Det Response	9.5 EXIT		7.9 Wind Loading
10.3 M2 Slow Speed Obstruct	10.4 M2 Obstruct Det Response	10.5 EXIT		7.10 EXIT
11.3 Slow Speed (%)	11.4 Open Slow Speed Area	11.5 Close Slow Speed Area	11.6 Stop Rev Delay Time	11.7 EXIT
12.3 M2 Open Anti-Jam	12.4 M2 Close Anti-Jam	12.5 Electronic Braking	12.6 Open Obstruction Operation	12.7 Close Obstruction Operation
				12.8 EXIT

14.3 EXIT				
15.3 Reset Max Current Records	15.4 EXIT			
16.3 Reset Factory Default	16.4 Test Inputs	16.5 Travel Timer for Slip Motors	16.6 Solar Gate Mode	16.7 Fuse Type : 10 or 15 Amps
		16.10 EXIT	16.9 Slow Speed Ramp Down	16.8 Day / Night Sensitivity

MC Connection Diagram



DNS Connection : On the top right corner of the control card is a connection for Day and Night Sensor(DNS). This sensor is available from Elsema and is used to detect day and night. This feature can be used to auto close the gate at night, turn on the courtesy light or lights on your gates during the night and many more features which require a day and night detection.

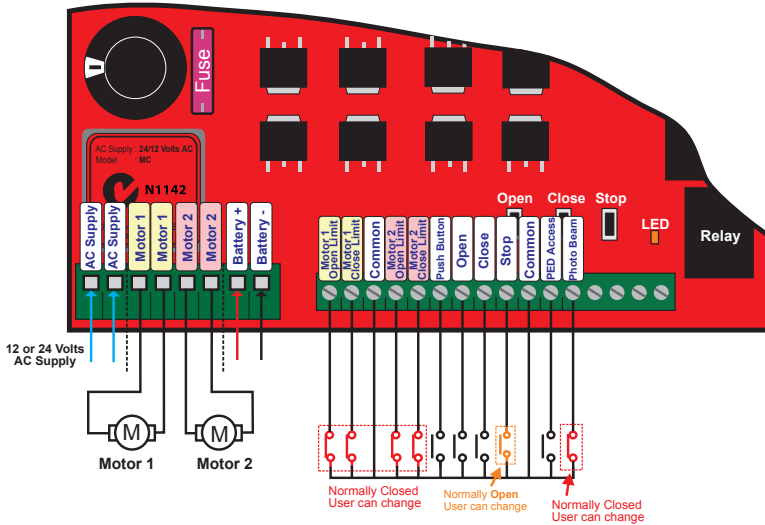
Electrical Wiring - Supply, Motors, Battery and Inputs



Always switch off power before doing any wiring.

Make sure that all the wiring is completed and that the motor is connected to the control card. **Recommended wire strip length should be 12mm for all connections to the plug in terminal blocks.**

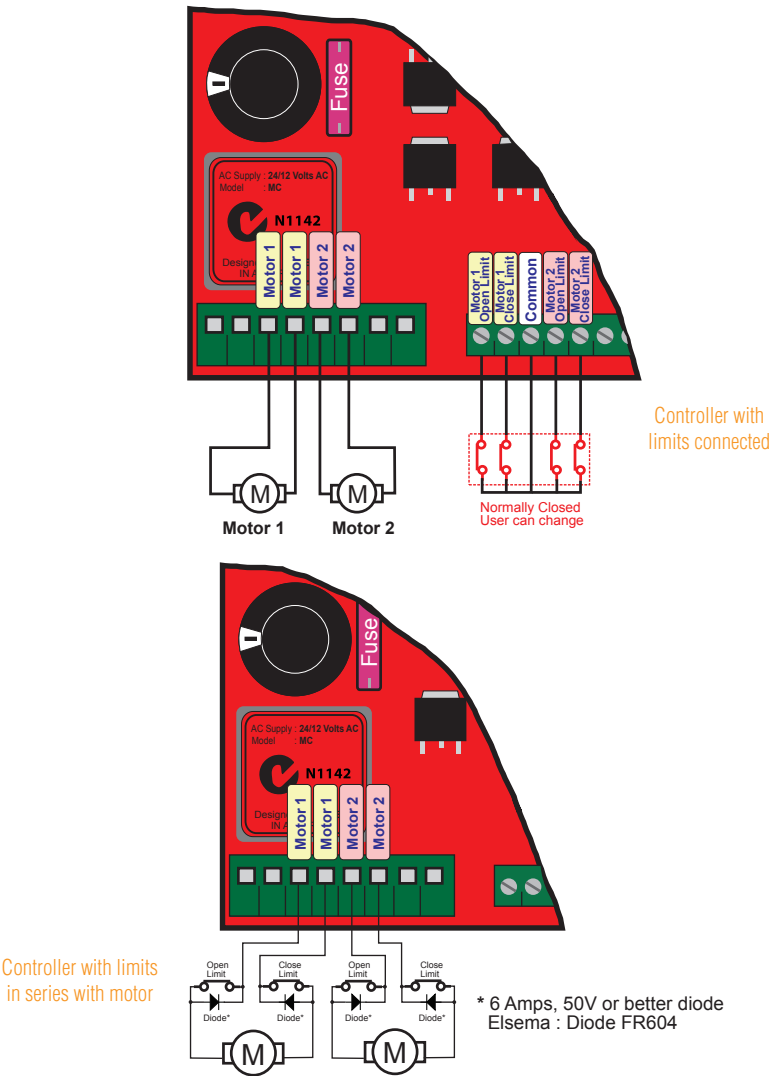
The diagram below shows the supply, motors, battery backup and inputs available and the factory default setting for each input.



If you are using mechanical stops move to the Setup i-Learning Steps. Skip Limit Switch section.

Limit Switches

If you are using limit switches make sure they are connected properly. The control card can operate with either the limit switches connected directly to the cards terminal blocks or in series with the motor. Check diagrams below:



By default the limit switch inputs on the control card are normally closed (NC). This can be changed to normally open (NO) during the setup steps.

Setup i-Learning Steps:

1. The i-Learning setup can always be interrupted with the stop button or by pressing the Master Control knob.
2. Enter Menu 13 to start i-Learning or new control cards will automatically prompt you to do the i-Learning.
3. Look at the LCD and follow the instructions displayed.
4. The MC control card will open and close the gates or doors several times to learn the load and travel distances. This is the auto profiling using latest intelligent technology.
5. Buzzer will indicate learning was successful. If there was no buzzer check all electrical wiring including the power supply then go back to step 1.
6. If you hear the buzzer the gate or door is ready for use.

Menu 1 – Auto Close

Auto close is a feature that automatically closes the gates/doors after a preset time has counted down to zero. The control card has a normal auto close and several special auto close features each one having its own countdown timers.

Elsema Pty Ltd recommends a photoelectric beam should be connected to the control card when any of the auto closes options are used.

If the stop button is pressed Auto Close is disabled for that cycle only. Holding the push button, open only or photoelectric beam will not allow the auto close timers to count down.

Menu No.	Auto Close Features	Factory Default	Adjustable
1.1	Normal Auto Close	Off	3 - 600 seconds
1.2	Auto Close with Photoelectric Trigger	Off	1 - 60 seconds
1.3	Auto Close after an Open Obstruction	Off	1 - 60 seconds
1.4	Auto Close after Power Restored	Off	1 - 60 seconds
1.5	Normal Auto Close on Sequential Obstructions	2	Min = Off, Max = 5
1.6	Auto Close Only when Fully Opened	Off	Off/On
1.7	Auto Close Only at Night with DNS connected	Off	Off/On
1.8	Exit		

1.1 Normal Auto Close

The gate/door will close after this timer has counted down to zero.

1.2 Auto Close with Photoelectric Trigger

A photoelectric beam needs to be triggered before this auto close starts counting down to close the gate/door. If there is no photoelectric beam trigger the gate/door will not close.

1.3 Auto Close after an Open Obstruction

If the gate/door opens and hits an obstruction normally the gate/door will stop and remain in this position. If this feature is enabled an obstruction will start the timer count down and at zero will close the gate/door.

1.4 Auto Close after Power Restored

If the gate/door is open in any position and then there is a power failure, when power is reconnected the gate/door will close with this timer.

1.5 Normal Auto Close on Sequential Obstructions

If the normal auto close is set and the gate/door closes onto an object the gate/door will stop and reopen. This setting sets the amount of times the gate/door will try to auto close. After trying for the set limit the gate/door will remain open.

1.6 Auto Close Only when Fully Opened

The auto close timer will not time out unless the gates/doors are fully opened.

1.7 Auto Close Only at Night

When the DNS is connected and the sensitivity (Menu 16.8) is set correctly the auto close will only work at night.

Menu 2 – Pedestrian Access

There are several types of Pedestrian access modes. Pedestrian access opens the gate/door for a short time to allow someone to walk through the gate/door but does not allow a vehicle access.

Elsema Pty Ltd recommends a photoelectric beam should be connected to the control card when any of the auto closes options are used.

Menu No.	Pedestrian Access Features	Factory Default	Adjustable
2.1	Pedestrian Access Travel Time	3 seconds	3 - 20 seconds
2.2	Pedestrian Access Auto Close Time	Off	0 - 60 seconds
2.3	Pedestrian Access Auto Close Time with PE trigger	Off	0 - 60 seconds
2.4	Pedestrian Access Auto Close on Sequential Obstructions	2	Min = Off, Max = 5
2.5	Pedestrian Access with Hold Gate	Off	Off/On
2.6	Exit		

2.1 Pedestrian Access Travel Time

This sets the time the gate/door opens when a pedestrian access input is activated.

2.2 Pedestrian Access Auto Close Time

This sets the countdown timer for automatically closing the gate/door when a pedestrian access input is activated.

2.3 Pedestrian Access Auto Close Time with PE Trigger

This sets the countdown timer for automatically closing the gate/door when a photoelectric beam is triggered and pedestrian access input is activated.

2.4 Pedestrian Access Auto Close on Sequential Obstructions

If the pedestrian access auto close is set and the gate/door closes onto an object the gate/door will stop and reopen. This setting sets the amount of times the gate/door will try to auto close. After trying for the set limit the gate/door will remain open.

2.5 Pedestrian Access with Hold Gate

If the pedestrian access hold gate is ON and the Pedestrian access input is permanently activated the gate will remain open in the pedestrian access position. Open input, Close input, Push Button input and remote controls are disable. Used in Fire Exit applications.

Menu 3 – Input Functions

This allows you to change the Polarity of photoelectric beam, stop and limit switch inputs.

Menu No.	Input Functions	Factory Default	Adjustable
3.1	Photoelectric Beam Polarity	Normally Closed	Normally Closed / Normally Open
3.2	Limit Switch Polarity	Normally Closed	Normally Closed / Normally Open
3.3	Stop Input Polarity	Normally Open	Normally Open / Normally Closed
3.4*	Auxiliary Input (M2 Open Limit Terminal)	Diasbled	Disable / Safety Bump Strip
3.5	Exit		

*** 3.4: This option is only available when used for single gate mode**

Motor 2 Open Limit terminal can be used to wire Elsema’s safety bump strip on a single gate application.

Menu 4 – Photoelectric Beam

The photoelectric beam is placed across the gate/door and when it is broken it can operate the gate/door to do certain functions.

Menu No.	Photoelectric Beam Feature	Factory Default	Adjustable
4.1	Photoelectric Beam	PE Beam stops and opens gate/door on close cycle	<div>PE Beam stops and opens gate/door on close cycle</div> <div>PE Beam stops gate/door on close cycle</div> <div>PE Beam stops gate/door on open & close cycle</div> <div>PE Beam stops and closes gate/door on open cycle</div>
4.2	Exit		

The factory default for the PE beam input is “normally closed” but this can be changed to normally open. To change it go back to Menu 3.

Elsema Pty Ltd recommends a photoelectric beam should be connected to the control card when any of the auto closes options are used.

Elsema sells several different types of photoelectric beams. We stock Retro-Reflective and Through Beam photoelectric beams.



PE1500
(Retro-Reflective Type)



PE24
(Through-Beam type)

Menu 5 – Relay Output Functions

The control card has two relay outputs, Output 1 and Output 2. The user can change the function of these outputs to lock / brake, courtesy light, service call, strobe (Warning) light indicator or locking actuator.

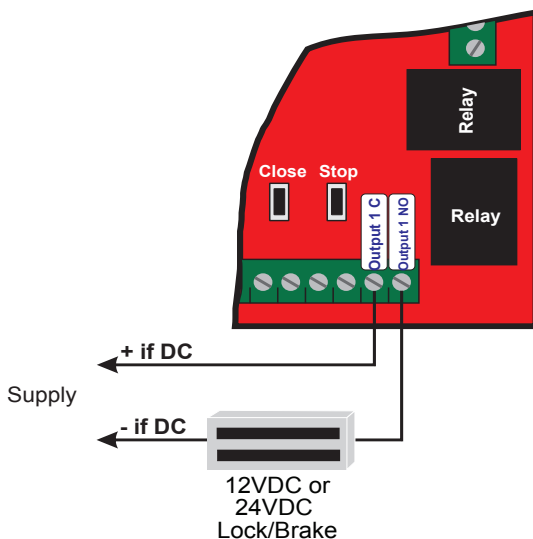
Output 1 is a voltage free relay output with common, normally open and normally closed contacts. Factory default is lock / brake release function.

Output 2 is a voltage free relay output with common, normally open and normally closed contacts. Factory default is courtesy light function.

Menu No.	Relay Output Function	Factory Default	Adjustable
5.1	Relay Output 1	Lock / Brake	Lock / Brake ----- Courtesy Light ----- Service Call ----- Strobe (Warning) Light ----- Locking Actuator
5.2	Relay Output 2	Courtesy Light	Lock / Brake ----- Courtesy Light ----- Service Call ----- Strobe (Warning) Light
5.3	Exit		

Lock / Brake Output

This output is used to power an electrical lock or a motor brake release. The factory default for the lock/brake release is on output 1. Output 1 is a voltage-free relay contact with common and normally open contacts. Having it voltage-free allows you to connect either 12VDC/AC, 24VDC/AC or 240VAC to the common. The normally open contact drives the lock/brake. See diagram below:

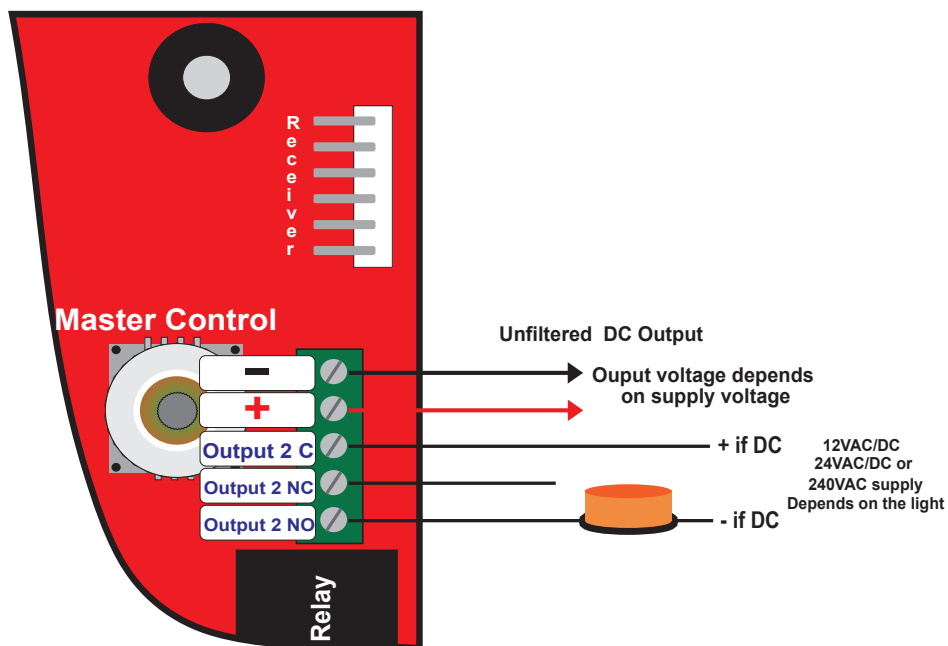


Courtesy Light

This output is used to power a courtesy light. The factory default for the courtesy light is on output 2. Output 2 is a voltage-free relay contact with common, normally open and normally closed contacts. Having it voltage-free allows you to connect either 12VDC/AC, 24VDC/AC or 240VAC supply to the common. The normally open contact drives the light. See diagram on the next page.

Service Call Output

Either output 1 or output 2 can be changed to service call indicator. This will trigger the output when the software service counter is reached. Used to alert installers or owners when the gate/door is to be serviced. Use Elsema's GSM-1000 receiver allows installers or owners to get a SMS message when the service is due.



Strobe (Warning) Light when Opening or Closing

The relay output is activated whenever the gates/doors are operating. The factory default is Off. Either output 1 or output 2 can be changed to strobe (Warning) light. Both relay outputs are voltage-free contacts. Having it voltage-free allows you to connect either 12VDC/AC, 24VDC/AC or 240VAC supply to the common to power the strobe light. Then the normally open contact drives the light. See diagram above.

Locking Actuator

Locking actuator mode uses both relay output 1 and relay output 2. The 2 outputs are used to change the polarity of the locking actuator to lock and unlock during opening and closing cycle. During pre-open relay output 1 is "ON" and during post-close relay output 2 is "ON". Pre-open and post-close times are adjustable.

Menu 6.1 – Lock / Brake Output Modes

The relay output in the lock / brake mode can be configured in different ways.

Menu No.	Lock / Brake Modes	Factory Default	Adjustable
6.1.1	Open Lock / Brake Activation	2 seconds	0 – 30 seconds or hold
6.1.2	Close Lock / Brake Activation	Off	0 – 30 seconds or hold
6.1.3	Open Pre-Lock / Brake Activation	Off	0 – 30 seconds
6.1.4	Close Pre-Lock / Brake Activation	Off	0 – 30 seconds
6.1.5	Exit		

6.1.1 Open Lock / Brake Activation

This sets the time the output is activated. Factory default is 2 seconds. Setting it to Hold means the output is activated for the total travel time in the open direction.

6.1.2 Close Lock / Brake Activation

This sets the time the output is activated. Factory default is off. Setting it to Hold means the output is activated for the total travel time in the close direction.

6.1.3 Open Pre-Lock / Brake Activation

This sets the time the output is activated before the motor starts in the open direction. Factory default is Off.

6.1.4 Close Pre-Lock / Brake Activation

This sets the time the output is activated before the motor starts in the close direction. Factory default is Off.

Menu 6.2 – Courtesy Light Output Mode

The relay output in the courtesy mode can be adjusted from 30 seconds to 18 hours. This sets the time the courtesy light is activated. Factory default is 1 minute.

Menu No.	Courtesy Light Mode	Factory Default	Adjustable
6.2.1	Courtesy Light Activation	1 minute	30 seconds to 18 hours
6.2.2	Courtesy Light at Night Only with LDR Connected	Off	Off/On
6.2.3	Exit		

Menu 6.3 – Strobe (Warning) Light Output Mode

The relay output in the strobe (Warning) mode can be configured in different ways:

Menu No.	Strobe (Warning) Light Mode	Factory Default	Adjustable
6.3.1	Pre-Open Strobe (Warning) Light Activation	Off	0 – 30 seconds
6.3.2	Pre-Close Strobe (Warning) Light Activation	Off	0 – 30 seconds
6.3.3	Exit		

6.3.1 Pre-Open Strobe Light Activation

This sets the time the strobe light is activated before the gate/door operates in the open direction. Factory default is Off.

6.3.2 Pre-Close Strobe Light Activation

This sets the time the strobe light is activated before the gate/door operates in the close direction. Factory default is Off.

Menu 6.4 – Service Call Output Mode

This sets the number of complete cycles (Open and Close) required before the built-in buzzer is activated. Also the control card outputs can be configured to be activated if the number of cycles is completed. Connecting Elsema's GSM-1000 alert receiver to the output allows owners to get a phone call or SMS message when the service is due.

When "Service Call Due" message shows up on the LCD a service call is required. After service has been done, follow the messages on the LCD.

Menu No.	Service Call Mode	Factory Default	Adjustable
6.4.1	Service Counter	Off	Min: 2000 to Max: 50,000
6.4.2	Exit		

Menu 6.5 – Locking Actuator Output Mode

The time for which relay output 1 turns "on" before the gate/door starts to open and the time for which relay 2 turns "on" after the gate/door is fully closed can be adjusted as below:

Menu No.	Locking Actuator	Factory Default	Adjustable
6.5.1	Pre-Open Lock Activation	Off	0 – 30 seconds
6.5.2	Post-Close Lock Activation	Off	0 – 30 seconds
6.5.3	Exit		

6.5.1 Pre-Open Locking Actuator Activation

This sets the time relay 1 is activated before the gate/door operates in the open direction. Factory default is Off.

6.5.2 Post-Close Locking Actuator Activation

This sets the time relay 2 is activated after the gate/door is fully closed. Factory default is Off.

Menu 7 – Special Features

The control card has many special features that can all be customised to your specific application.

Menu No.	Special Features	Factory Default	Adjustable
7.1	Remote Control Open Only	Off	Off/On
7.2	Holiday Mode	Off	Off/On
7.3	Energy Saving Mode	Off	Off/On
7.4	Automatic Stop/Open on Closing	On	Off/On
7.5	Receiver Channel 2 Options	Off	Off / Light / Pedestrian Access
7.6	Press and Hold for Open Input	Off	Off/On
7.7	Press and Hold for Close Input	Off	Off/On
7.8	Window / Louvre	Off	Off/On
7.9	Wind Loading	Off	Off/On
7.10	Exit		

7.1 Remote Control Open Only

By default the remote control allows the user to open and close the gates/doors. In public access areas user should only be able to open the gates/doors and not worry about closing it. Usually the auto close is used to close the gates/doors. This mode disables closing for the remote controls.

7.2 Holiday Mode

This feature disables all the remote controls.

7.3 Energy Saving Mode

This puts the control card to very low standby current that reduces your electricity bill while still maintaining normal functions and operations.

7.4 Automatic Stop / Open on Closing

By default if the gates/doors is closing and a push button or remote control is activated it will automatically stop and open the gates/doors. When this feature is disabled then the gates/doors will stop on an activation of the push button or remote control.

7.5 Receiver Channel 2 Options

The receivers 2nd channel can be programmed to control a courtesy light or used for pedestrian access.

7.6 & 7.7 Press and Hold for Open and Close Inputs

If this feature is ON the user must continuously press the open or close input for it to be activated.

7.8 Window or Louvre Mode

This mode optimises the control card for operating electronic windows or louvres.

Menu 8 – Leaf Delay

Leaf delay is used when one gate leaf will close in an overlapping position to the first closed leaf. This leaf delay may also be necessary for special add-on locking pins. The control card has separate leaf delay for the open and close directions.

When the control card is used with a single motor the leaf delay mode is disabled.

Menu No.	Leaf Delay	Factory Default	Adjustable
8.1	Open Leaf Delay	3 seconds	Off - 25 seconds
8.2	Close Leaf Delay	3 seconds	Off - 25 seconds
8.3	Exit		

8.1 Open Leaf Delay

Motor 1 will start opening first. After leaf delay time has expired motor 2 will start opening.

8.2 Close Leaf Delay

Motor 2 will start closing first. After leaf delay time has expired motor 1 will start closing.

8.3 Close Leaf Delay on Mid Stop

By default motor 1 will always have delay when closing even if the gate is not fully open. When disabled both motor 1 and motor 2 will start closing at the same time only when not fully open.

Menu 9 – Motor 1 Obstruction Detect Margins

This sets the current sensitivity margin above the normal run current to trip the gates/doors if an obstruction is detected. Different obstruction margins can be set for the open and close direction. Also the response time is adjustable.

The minimum margin will allow least pressure applied to trip the gates/doors if it hits an object. The maximum margin will allow for a large amount of pressure applied to trip the gates/doors if it hits an object.

Menu No.	Motor 1 Obstruction Detect Margins and Response Time	Factory Default	Adjustable
9.1	Open Obstruction Margin	1 Amp	0.5 - 6.0 Amps
9.2	Close Obstruction Margin	1 Amp	0.5 - 6.0 Amps
9.3	Open and Close Slow Speed Obstruction Margin	1 Amp	0.5 - 6.0 Amps
9.4	Obstruction Detect Response Time	Medium	Fast, Medium and Slow
9.5	Exit		

Margin Example

Motor is running at 2 Amps and the margin is set to 1.5 Amps, an obstruction detect will occur at 3.5 Amps (Normal Running Current + Margin).

For high margin settings the supply transformer should be large enough to supply the high margin current.

If the gates/doors hits an object on closing it will automatically stop and then re-open. If the gates/doors hit an object on opening it will automatically stop.

Menu 10 – Motor 2 Obstruction Detect Margins

This sets the current sensitivity margin above the normal run current to trip the gates/doors if an obstruction is detected. Different obstruction margins can be set for the open and close direction. Also the response time is adjustable.

The minimum margin will allow least pressure applied to trip the gates/doors if it hits an object. The maximum margin will allow for a large amount of pressure applied to trip the gates/doors if it hits an object.

Menu No.	Motor 2 Obstruction Detect Margins and Response Time	Factory Default	Adjustable
10.1	Open Obstruction Margin	1 Amp	0.5 - 6.0 Amps
10.2	Close Obstruction Margin	1 Amp	0.5 - 6.0 Amps
10.3	Open and Close Slow Speed Obstruction Margin	1 Amp	0.5 - 6.0 Amps
10.4	Obstruction Detect Response Time	Medium	Fast, Medium and Slow
10.5	Exit		

Margin Example

Motor is running at 2 Amps and the margin is set to 1.5 Amps, an obstruction detect will occur at 3.5 Amps (Normal Running Current + Margin).

For high margin settings the supply transformer should be large enough to supply the high margin current.

If the gates/doors hits an object on closing it will automatically stop and then re-open. If the gates/doors hit an object on opening it will automatically stop.

Menu 11 – Motor Speed, Slow Speed Area and Reverse Time

Menu No.	Motor Speed, Slow Speed Area and Reverse Time	Factory Default	Adjustable
11.1	Open Speed	80%	50% to 125%
11.2	Close Speed	70%	50% to 125%
11.3	Open and Close Slow Speed	50%	35% to 65%
11.4	Open Slow Speed Area	4	1 to 12
11.5	Close Slow Speed Area	5	1 to 12
11.6	Stop Reverse Delay	0.4 seconds	0.2 to 2.5 seconds
11.7	Exit		

11.1 & 11.2 Open and Close Speed

This sets the speed at which the gates/doors will travel. If the gate/door is travelling too fast reduce this value.

11.3 Slow Speed

This sets the speed at which the gates/doors will travel in the slow speed region. If the gates/doors is travelling too slow increase this value.

11.4 & 11.5 Slow Speed Area

This sets the slow speed travel area. If you want more travel time for the slow speed area increase this value.

11.6 Obstruction Stop Reverse Delay Time

This sets the stop and reverse delay time when the gates/doors hits an obstruction.

Menu 12 – Anti-Jam, Electronic Braking and Gate Movement after Obstruction

Menu No.	Anti-Jam or Electronic Braking	Factory Default	Adjustable
12.1	Motor 1 Open Anti-Jam	OFF	0 to 2.0 seconds
12.2	Motor 1 Close Anti-Jam	OFF	0 to 2.0 seconds
12.3	Motor 2 Open Anti-Jam	OFF	0 to 2.0 seconds
12.4	Motor 2 Close Anti-Jam	OFF	0 to 2.0 seconds
12.5	Electronic Braking	OFF	Off/On
12.6	Opening Direction : Gate Movement after Obstruction	Stop	Stop / Reverse for 2 sec / Reverse Fully
12.7	Closing Direction : Gate Movement after Obstruction	Reverse for 2 seconds	Stop / Reverse for 2 sec / Reverse Fully
12.8	Exit		

12.1 and 12.2 Motor 1 Open and Close Anti-Jam

When the gates/doors are in the fully open or fully closed position this feature applies a reverse voltage for a very short time. It will prevent the motor from jamming up the gates/doors so it is easy to disengage the motors for manual operation.

12.3 and 12.4 Motor 2 Open and Close Anti-Jam

When the gates/doors are in the fully open or fully closed position this feature applies a reverse voltage for a very short time. It will prevent the motor from jamming up the gates/doors so it is easy to disengage the motors for manual operation.

12.5 Electronic Braking

This will stop the motors with an electronic brake. Brake applies to obstruction and Stop inputs.

12.6 Opening Direction : Gate Movement after Obstruction

After an obstruction has occurred the gate will either stop, reverse for 2 seconds or reverse fully.

12.7 Closing Direction : Gate Movement after Obstruction

After an obstruction has occurred the gate will either stop, reverse for 2 seconds or reverse fully.

Menu 13 – i-Learning

This feature allows you to do the intelligent travel learning of the gates/doors. Follow the messages on the LCD to complete the learning

Menu 14 – Password

This will allow the user to enter a password to prevent unauthorised users from entering the control card settings. User must remember the password. The only way to reset a lost password is to send the control card back to Elsema.

To delete a password select Menu 14.2 and press Master Control.

Menu 15 – Operational Records

This is for information only.

Menu No.	Operational Records
15.1	Event History, up to 100 events are recorded in the memory
15.2	Displays Gates/Doors Operations and Currents Levels
15.3	Reset Maximum Current Records
15.4	Exit

15.1 Event History

The event history will store 100 events. The following events are recorded into the memory: Power On, Low Battery, All input activations, Successful opening, Successful closing, Obstruction Detected, Unsuccessful i-Learning Attempt, Factory Reset, Dc Output Overloaded, AC Supply Failed, AC Supply Restored, Autoclose, Security Close and Fuse Protect Obstruction.

15.2 Displays Gates/Doors Operations and Current Levels

This displays the number of open cycles, close cycles, pedestrian cycles, open obstructions, close obstructions and both motor current levels. All maximum current values can be reset by the user from Menu 15.3

Menu 16 – Tools

Menu No.	Tools
16.1	Number of Motors, Single or Double Gate System
16.2	Set the Supply Voltage : 12 or 24 Volts
16.3	Resets Controller to Factory Settings
16.4	Test Inputs
16.5	Travel Timer for Slip Clutch Motors
16.6	Solar Gate Mode : Optimises the Control Card for Solar Applications
16.7	Fuse Type : 10 or 15 Amps Optimises the Control Card for the correct Blade Fuse used
16.8	Day and Night Sensitivity Adjustment for the DNS
16.9	Slow Speed Ramp Down Time
16.10	Exit

16.1 Number of Motors

This allows you to manually set the control card to a single motor or a double motor. The control card will automatically test for motors connected during setup.

16.2 Set the Supply Voltage

This allows you to manually set the control card to 12 or 24 Volt supply. The control card will automatically set the correct supply voltage during setup. To use the control card in a solar application you must set the correct voltage in the Tools. This will disable the automatic voltage sensing which could causes problems in solar applications.

16.3 Resets Controller

Reset all settings to factory default. Also removes password.

16.4 Test Inputs

This allows you to test all the external devices connected to the controllers inputs. UPPERCASE means input is activated and lowercase means input is deactivated.

16.5 Travel Timer for Slip Clutch Motors

This allows you to use the controller with travel timers. Motor 1 and 2 can have separate travel timers up to 120 seconds. Used for Hydraulic Motors.

16.9 Slow Speed Ramp Down Time

This allows you to change the time it takes the gate/door to change its speed from fast to slow.

Accessories

Battery Charger

The control card has a built in charger for backup batteries. Simply connect the batteries to the battery terminal and the charger will automatically charge the batteries. This allows you to use your gates or doors when the mains power has failed. The control card built-in charger is not suitable for solar applications.

Solar Applications

Solar applications use Elsema solar charger, CMP12 to charge the batteries and SP20 or SP40 solar panels. Solar gate controller kits are available.

WARNING

To use the control card in a solar application you must set the correct voltage input in the Tools Menu (16.2). This will disable the automatic voltage sensing which could causes problems in solar applications.

Backup Batteries

Elsema has backup batteries perfectly matched to the control card. Three sizes are available:

Lab12-12, 12 Volt 12 AH Rechargeable, ideal for solar and industrial gates and doors.

Lab12-7.0, 12 Volt 7.0 AH Rechargeable, ideal for solar and industrial gates and doors

Lab12-2.6, 12 Volt 2.6 AH Rechargeable, ideal for domestic gates and doors



Solar Panels
SP20 & SP40



Backup Batteries

Keyring Remotes

The latest PentaCODE® and PentaFOB® keyring remotes ensure your gates or doors are secure. Visit www.elsema.com for more details.

Photoelectric Beam

Elsema has several types of photoelectric beams including retro-reflective and through beam with IP-66 ratings.

PentaCODE® Remotes



PentaFOB® Remotes

Flashing Lights

Elsema has several flashing lights to act as a warning when the gate or doors is in operation.



Flashing
Lights



Penta Repeater can increase the operating range of the keyring remotes to up to 500 metres.