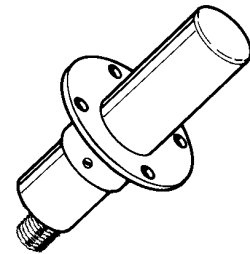


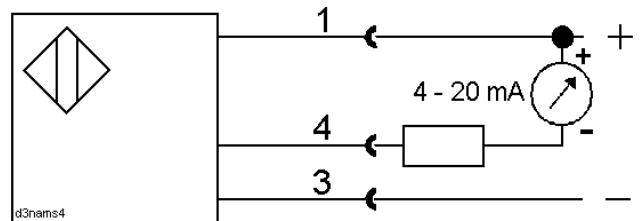
The air flow controller is mounted into the flow to be controlled as a stationary sensing unit with the flange or a PG 29 union. The air flow produces an output signal which is proportionate to the velocity. The heated flow sensors are arranged below the face of the hermetically closed casing of insulating material. Thanks to the calorimetric measuring principle with electronic evaluation maintenance-free operation is possible.



Technical Data

Type	FKM 230.194 S4
Art.-No.	8027G
Output	4 - 20 mA ($R_L \leq 560 \Omega$)
Measuring range	0 - 16 m/s
Resolution	0,01 m/s
Exactitude	+/- 5 %
Temperature error	0,5 %/K
Response time	15 s (t 90)
Starting time	5 min
Supply voltage	24 V DC +10 % / -15 %
Power absorption	60 mA
Ambient temperature	0 to +50 °C
Protection class	IP 67
Connection	plug S4 (M12x1)
Function display	LED
Housing material	plastic

Diagram of Connections



Output current/flow rate standard

