

MX-5050BIII

The following exploded view drawings and parts lists are provided for service reference. Each drawing has its own parts list with the same key number and title.

When ordering parts, give a full description, using both the part number and the name of the part. If there seems to be a discrepancy between the drawings herein and your MX-5050BIII, contact Otari. We assume no liability for improper servicing due to changes and improvements which we make that subsequently render certain of these documents obsolete.

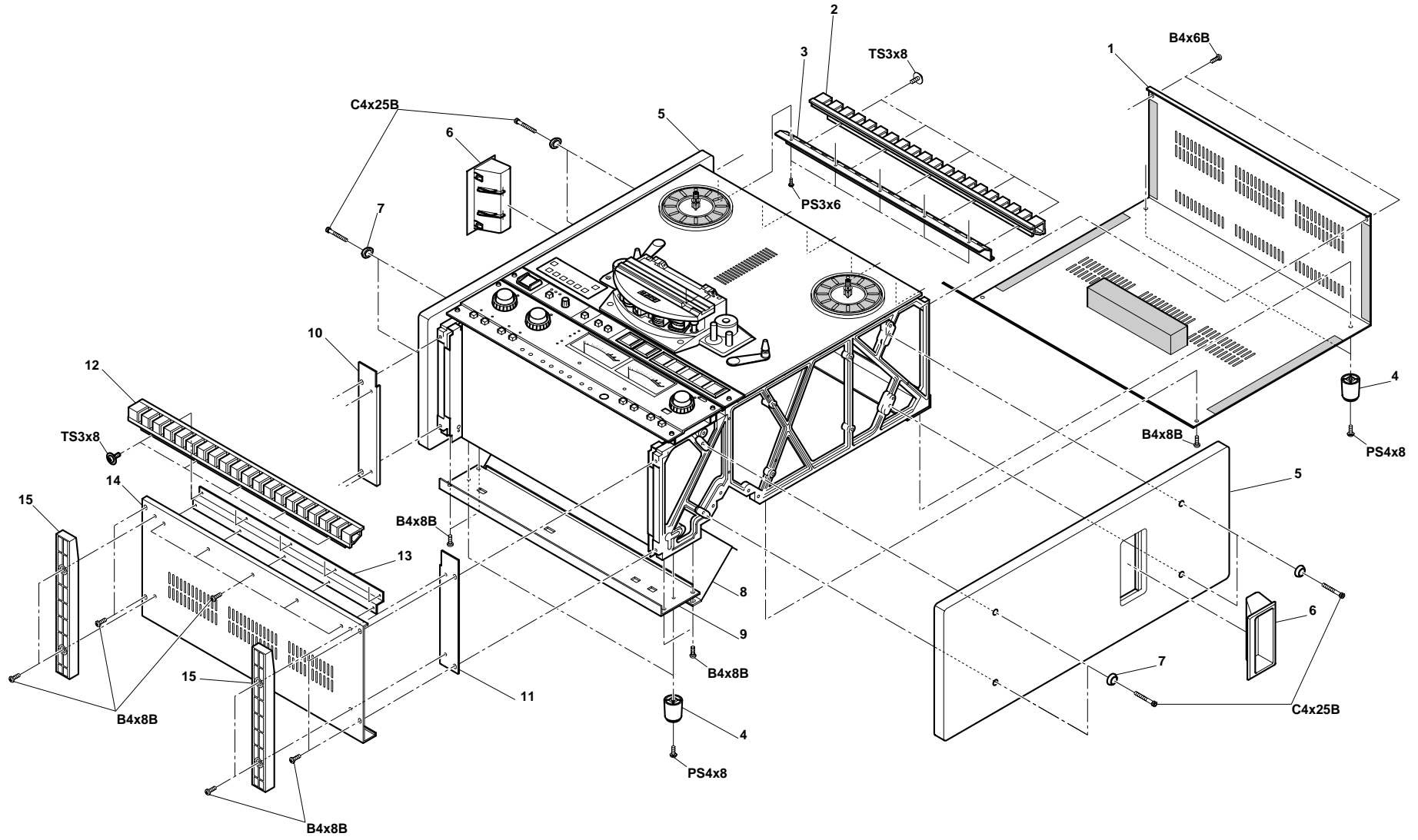
MX-5050BIII

REF #	ASSEMBLY NAME	OTARI PN
1.	CASE ASSEMBLY	K1168---
2.	CHASSIS ASSEMBLY	T0067---
3.	HEAD ASSEMBLY	KH-45D--
4.	REEL ASSEMBLY	KW-41J--
5.	PINCH ROLLER ASSEMBLY	KP-4X---
	CAPSTAN ASSEMBLY	KC-41H--
	LIFTER ASSEMBLY	KR-4W---
6.	TENSION ARM ASSEMBLY	KA-4X---
	TENSION ARM ASSEMBLY	KA-4Y---
	IMPEDANCE ROLLER ASSEMBLY	KI-4T---
	TIMER ASSEMBLY	ZA-95G--
7.	CONTROL ASSEMBLY	CB-23U--
8.	AMPLIFIER ASSEMBLY	A1220---
9.	CONNECTOR PANEL ASSEMBLY	CB-792--

1. Case Assembly

NO.	DESCRIPTION	OTARI PN	NOTES
1.	REAR COVER ASSEMBLY	K1168-A-	
2.	GRILLE, VENTILATION	CY5001A-	
3.	PLATE C	K102911-	
4.	FOOT	CY4013--	
5.	PANEL, SIDE	K116802-	
6.	HUNDLE	CY1004--	
7.	WASHER, TRIM	KZ6C028-	
8.	CONNECTOR PANEL ASSEMBLY	CB-792--	
9.	PANEL, REAR	A106204-	
10.	PLATE, L	K102909-	
11.	PLATE, R	K102910-	
12.	GRILLE, VENTILATION	CY5001A-	
13.	PLATE	K102907-	
14.	PANEL, BOTTOM	K102906A	
15.	FOOT, CASE	CY4011-A	

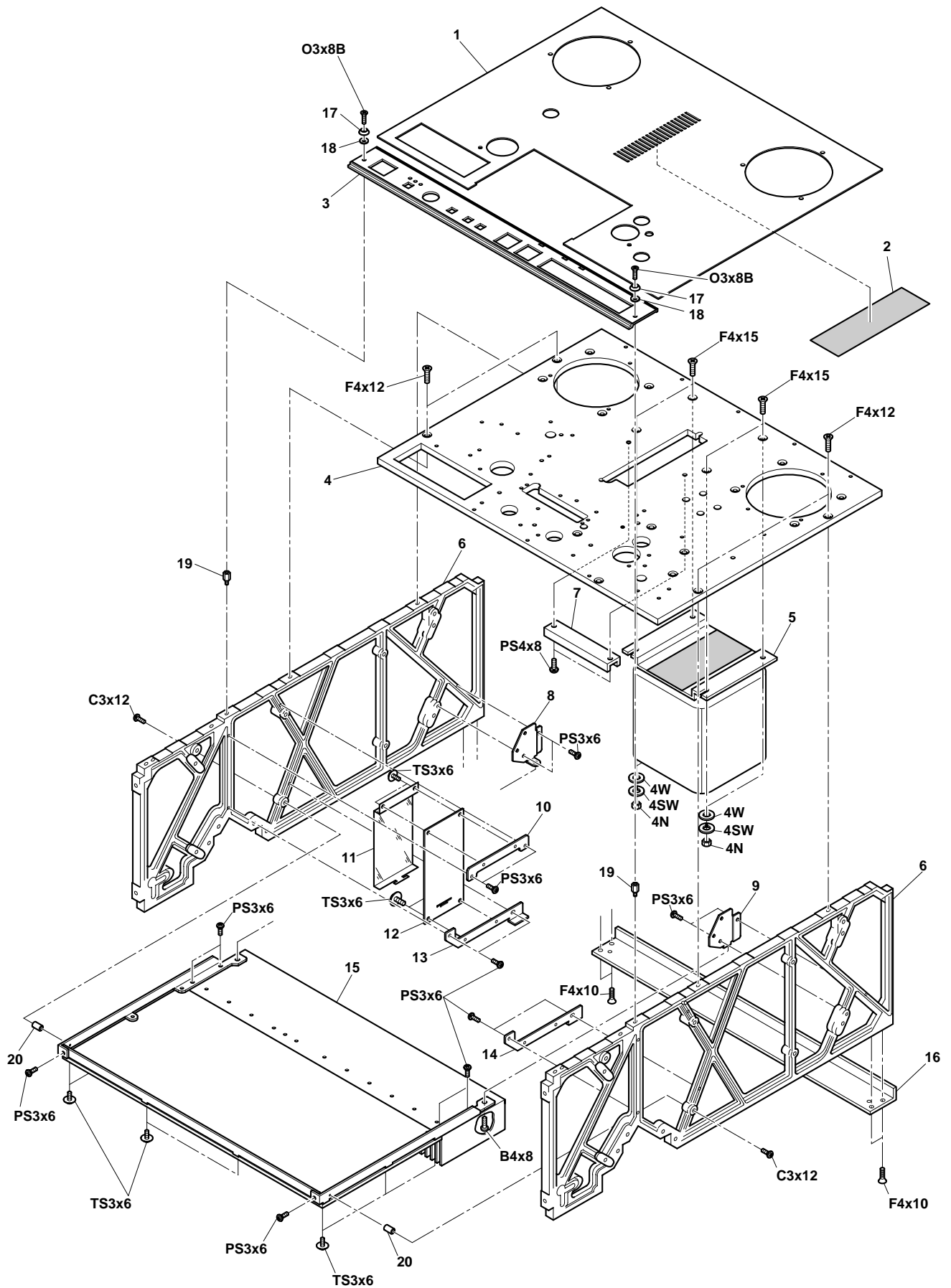
1. Case Assembly



2. Chassis Assembly

NO.	DESCRIPTION	OTARI PN	NOTES
1.	PANEL, DECK COVER	T006702-	
2.	BLIND	T006703-	
3.	CONTROL ASSEMBLY	CB-23U--	
4.	PANEL, TOP	T006701-	
5.	TRANSFORMER, POWER	TF11030-	
6.	FRAME	T006708-	
7.	ANGLE	T506405-	
8.	BRACKET L	T007104-	
9.	BRACKET R	T007105-	
10.	BRACKET	T006705-	
11.	COVER, FUSE	T005306-	
12.	PCB ASSEMBLY, FUSE	PB-7VCA-	
13.	BRACKET L	T006710-	
14.	BRACKET R	T006709-	
15.	PCB ASSEMBLY, CONTROL	PB-4RMA-	
16.	ANGLE, FRAME	T506104-	
17.	WASHER, TRIM	KZ6C051-	
18.	WASHER	KZ6C011-	
19.	STUD	KZ9L080A	
20.	STUD	KZ9A095B	

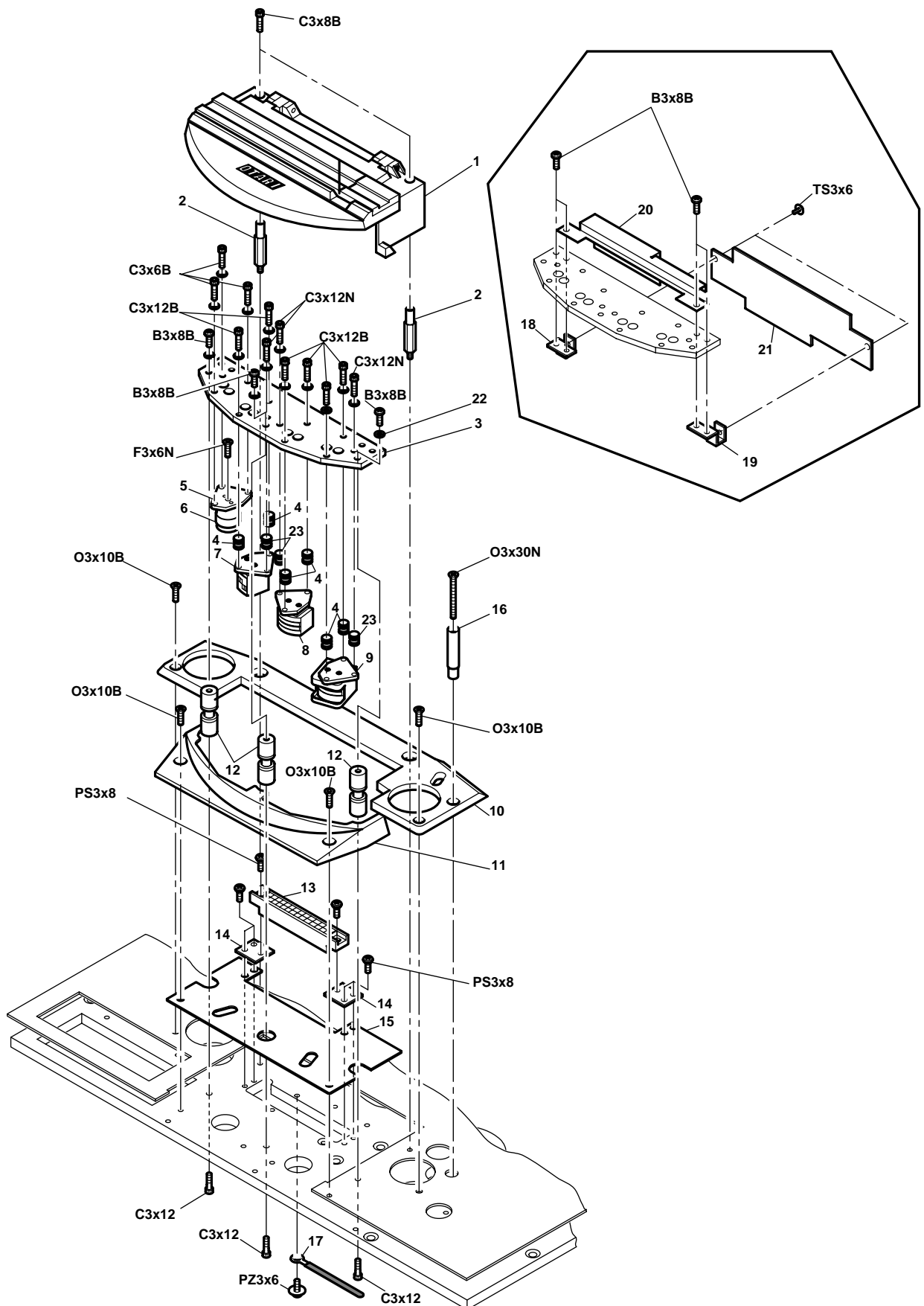
2. Chassis Assembly



3. Head Assembly

NO.	DESCRIPTION	OTARI PN	NOTES
1.	HEAD HOUSING ASSEMBLY	KH-4Y-A-	
2.	STUD	KH4Y009-	
3.	BASE, HEAD	KH0C047-] HEAD SUB ASSY KH-45DA
4.	SPRING, HEAD ADJUSTMENT	GS2016--	
5.	BRACKET, HEAD	KH0D178-	
6.	POST, GUIDE	KG4E001-	
7.	HEAD ASSEMBLY, 1/4" 2CH ERASE	GH4E082B	
8.	HEAD ASSEMBLY, 1/4" 2CH RECORD	GH4R157A	
9.	HEAD ASSEMBLY, 1/4" 2CH REPRODUCE	GH4P158A	
10.	COVER, HOUSING	KH0F038-	
11.	HEAD HOUSING, FRONT	KH0F037-	
12.	GUIDE, TAPE	KG4A003-	
13.	CONNECTOR	CN314002	
14.	BRACKET, CONNECTOR	KH4Y004-	
15.	PLATE, SHIELD	KH4Y001A	
16.	POLE, GUIDE	KG6E020-	
17.	CLAMP, CABLE	PZ1G053-	
18.	BRACKET L, PCB	KH41I01-] HEAD SUB ASSY KH-45DA
19.	BRACKET R, PCB	KH41I02-	
20.	COVER, PROTECTION	KH41T02-	
21.	PCB ASSEMBLY, HEAD RELAY	PB-78IAB	
22.	WASHER, POLYSLIDER	F523030-	
23.	SPRING, HEAD ADJUSTMENT	GS2015--	

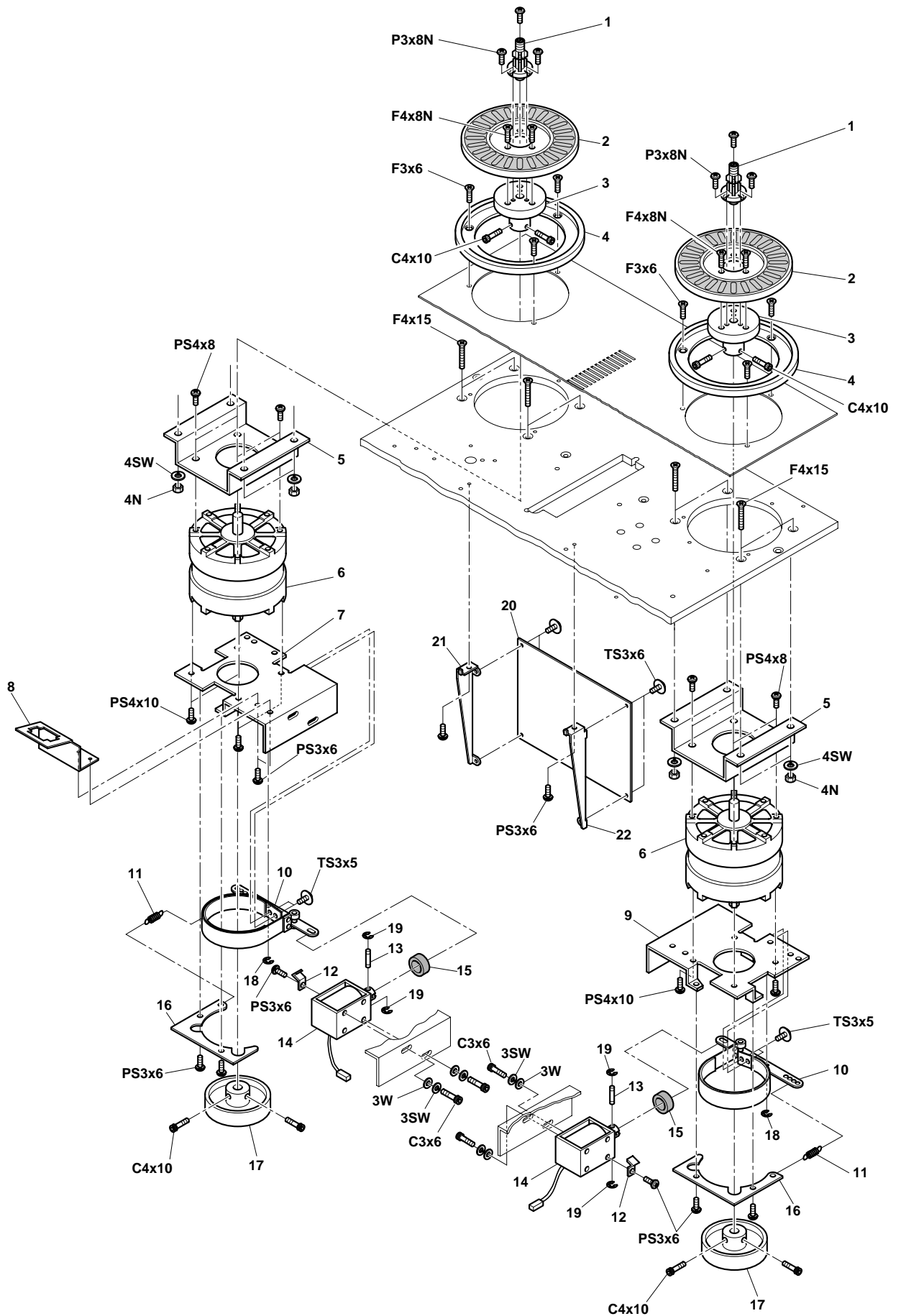
3. Head Assembly



4. Reel Assembly

NO.	DESCRIPTION	OTARI PN	NOTES
1.	REEL SHAFT ASSEMBLY	KW-41DG-	
2.	REEL TABLE ASSEMBLY	KW-41EA-	
3.	HOLDER, REEL TABLE	KW0B056-	
4.	PROTECTOR, REEL	KW0H007A	
5.	BRACKET, REEL MOTOR	KW0G016-	
6.	MOTOR, REEL	MR1C005-	
7.	BASE L, BRAKE	KW0G013-	
8.	BRACKET, CONNECTOR	KW41J01-	
9.	BASE R, BRAKE	KW0G012-	
10.	BRAKE BAND ASSEMBLY	KW-4J-A-	
11.	SPRING	GS1175--	
12.	STOPPER, CABLE	KZ3A180-	
13.	PIN, SOLENOID	KZ5A003-	
14.	SOLENOID	GP1F03--	
15.	DAMPER	PZ1B049-	
16.	GUIDE, BRAKE	KW4B001-	
17.	DRUM, BRAKE	KW0A012-	
18.	RING, E TYPE	F74TE15-	
19.	RING, E TYPE	F74TE09-	
20.	PCB ASSEMBLY, REEL MOTOR DRIVE	PB-4RNA-	
21.	BRACKET A, REEL MOTOR DRAIVE PCB	T005317-	
22.	BRACKET B, REEL MOTOR DRAIVE PCB	T005318-	

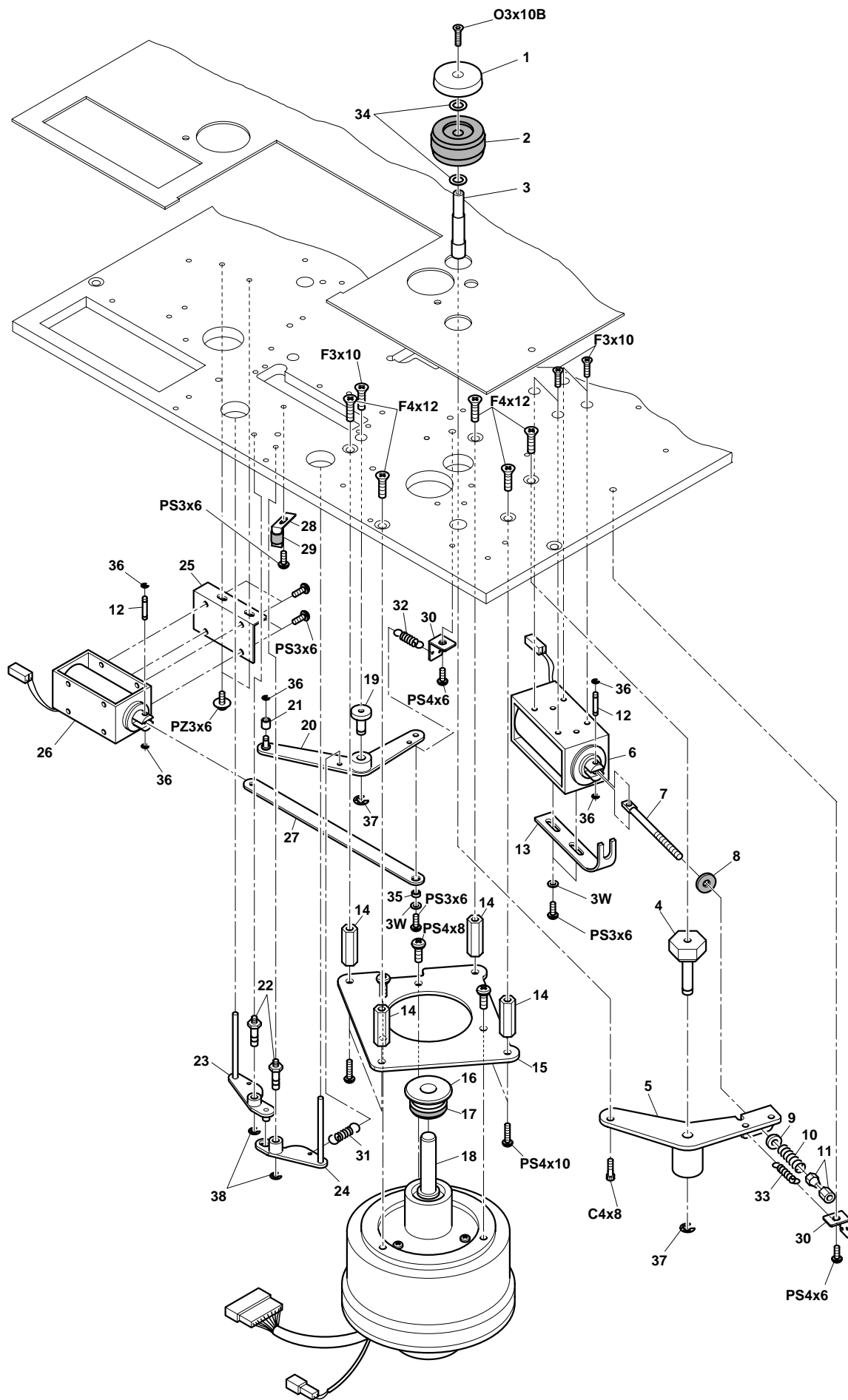
4. Reel Assembly



5. Pinch Roller Assembly, Capstan Assembly, and Lifter Assembly

NO.	DESCRIPTION	OTARI PN	NOTES
1.	CAP, PINCH ROLLER	KP0C034-	
2.	PINCH ROLLER ASSEMBLY	KP-4S-B-	
3.	SHAFT, PINCH ROLLER	KP0B060-	
4.	SHAFT, ARM	KP4L001-	
5.	PINCH ROLLER ARM ASSEMBLY	KP-4X-A-	
6.	SOLENOID	GP1B12--	
7.	SCREW, ADJUSTMENT	KZ6A113-	
8.	DAMPER	PZ1C021-	
9.	WASHER SPHERICAL	KP0G004-	
10.	SPRING	GS2163--	
11.	NUT, DUBBLE	F517-4--	
12.	PIN, SOLENOID	KZ5A003-	
13.	STOPPER, SOLENOID	KZ2A016-	
14.	STUD	KZ9I250A	
15.	BRACKET, MOTOR	KC4H001-	
16.	CAP, DUST	MR0D009-	
17.	RING	PZ1C130-	
18.	MOTOR, CAPSTAN	MR-1L---	
19.	SHAFT, LINK ARM	KR4W005-	
20.	LIFTER LINK ASSEMBLY	KR-4W-A-	
21.	COLLAR	KZ7C109-	
22.	SHAFT, ARM	KR4B001-	
23.	ARM A, LIFTER	KR0B005-	
24.	ARM B, LIFTER	KR0B006-	
25.	BRACKET, LIFTER SOLENOID	KR4W007-	
26.	SOLENOID	GP1A09--	
27.	ARM, LINK	KR4W004-	
28.	ANGLE	KZ3A042-	
29.	PIPE, RUBBER	PZ1C174-	
30.	HOOK	KZ3A167-	
31.	SPRING	GS1185--	
32.	SPRING	GS1028-A	
33.	SPRING	GS1149--	
34.	WASHER, POLYSLIDER	F524060-	
35.	STUD	KZ7A823-	
36.	RING, E TYPE	F74TE09-	
37.	RING, E TYPE	F74TE20-	
38.	RING, E TYPE	F74TE15-	

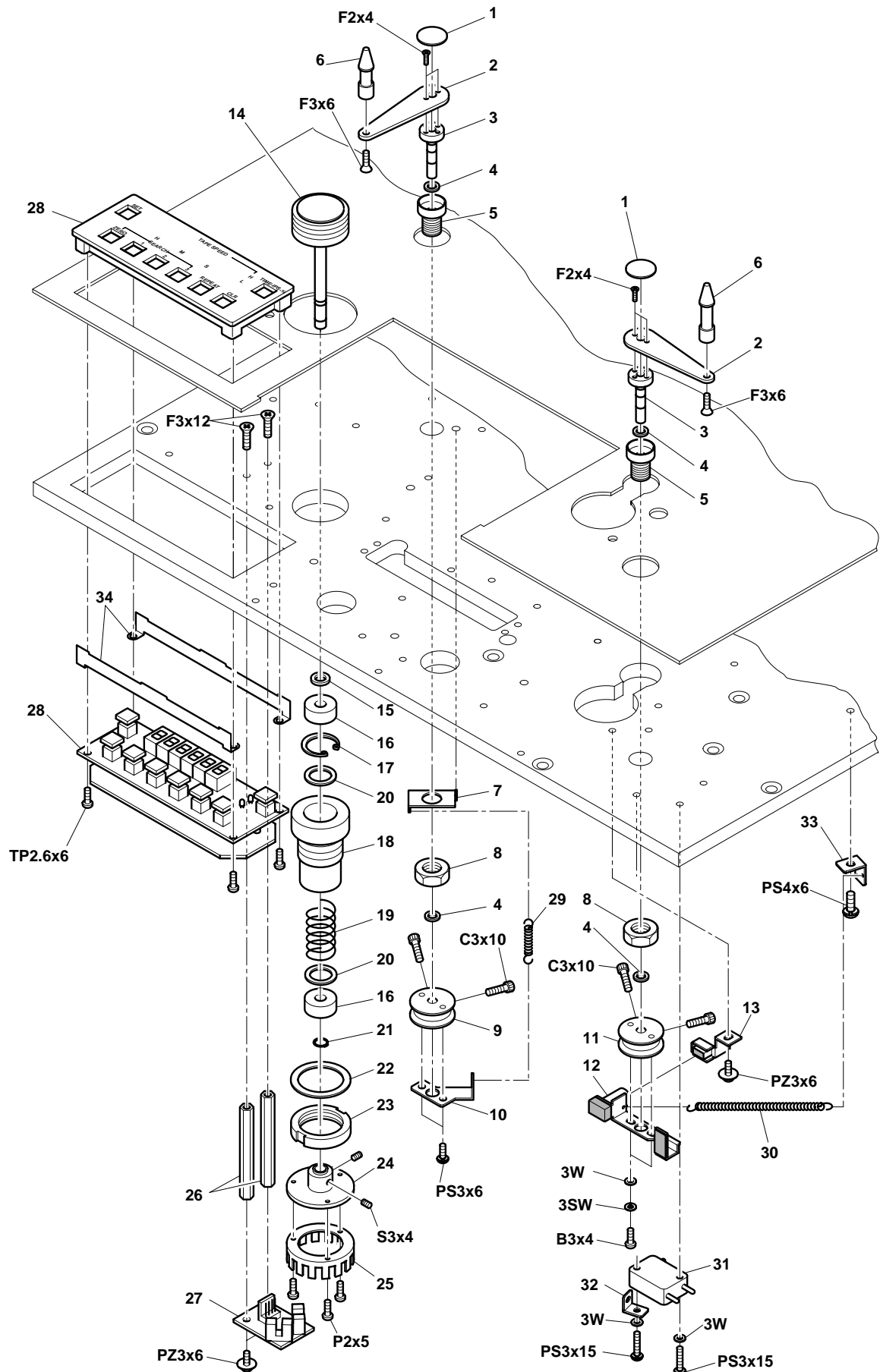
5. Pinch Roller Assembly, Capstan Assembly, and Lifter Assembly



6. Tension Arm Assembly, Impedance Roller Assembly, and Timer Assembly

NO.	DESCRIPTION	OTARI PN	NOTES
1.	CAP, ARM	KA0C005-	
2.	ARM, TENSION	KA0A017A	
3.	SHAFT, ARM	KA4J001-	
4.	WASHER, POLYSLIDER	F524-5--	
5.	HOLDER, ARM	KA0B008-	
6.	GUIDE, TAPE	KG4D007-	
7.	HOOK, SPRING	KZ3A024-	
8.	NUT	KZ6D004-	
9.	HOOK A, SPRING	KA0E017-	
10.	STOPPER, ARM	KA4X001-	
11.	HOOK B, SPRING	KA0E005-	
12.	SWITCH ACTUATOR ASSEMBLY	KA-4K-B-	
13.	MAGNET ASSEMBLY	KA-4K-C-	
14.	ROLLER ASSEMBLY	KI-4J-B-	
15.	COLLAR	KZ7C057-	IMPEDANCE ROLLER SUB ASSY KI-4J-A
16.	BEARING	BA1Z0603	
17.	RING	F7017---	
18.	HOLDER	KI0B014-	
19.	SPRING	GS2077--	
20.	WASHER	KZ6C057-	
21.	RING, SHAFT	F7206---	
22.	WASHER	KI0H024-	
23.	NUT, HOLDER	KI0H025-	
24.	BOSS	KI4T001-	
25.	DISK, TACHOMETER	SR3Z033-	
26.	STUD	KZ9H480C	
27.	PCB ASSEMBLY, ROLLER TACHOMETER	PB-4HCA-	
28.	TIMER DISPLAY ASSEMBLY	ZA-95G--	
29.	SPRING	GS1025--	
30.	SPRING	GS1048--	
31.	SWITCH, MICRO	WH51027-	
32.	HOOK, SPRING	KZ3A023-	
33.	HOOK	KZ3A167-	
34.	BRACKET	KZ2A165-	

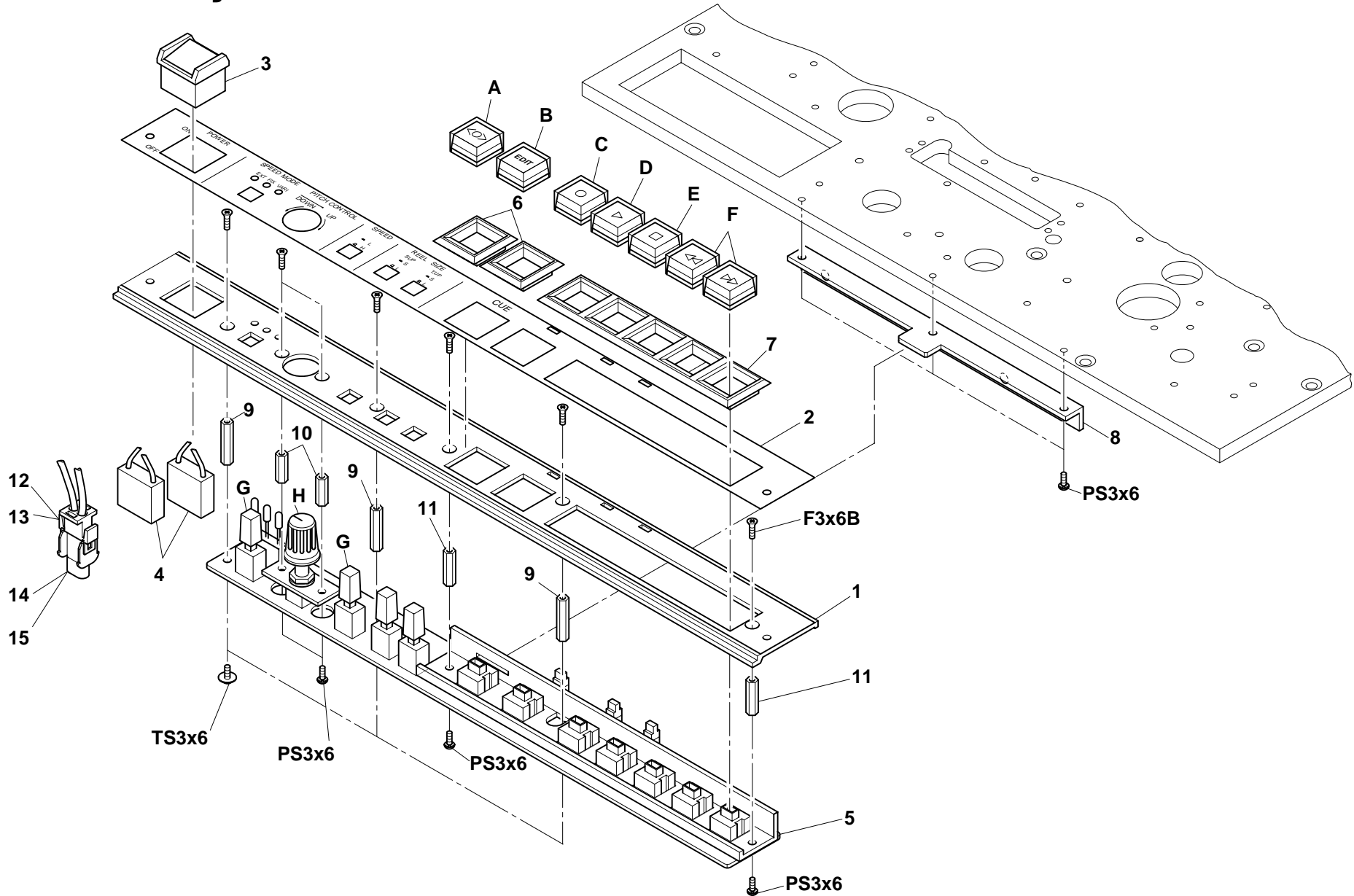
6. Tension Arm Assembly, Impedance Roller Assembly, and Timer Assembly



7. Control Assembly

NO.	DESCRIPTION	OTARI PN	NOTES
1.	PANEL, CONTROL	CB23U01-	
2.	SHEET, CONTROL PANEL	CB23U02-	
3.	SWITCH, POWER	WH42062-	
4.	CAPACITOR, SPARK KILLER	CZ20014-	
5.	PCB ASSEMBLY, TRANSPORT CONTROL SWITCH	PB-7UZA-] ASSY
A.	BUTTON, CUE	KN2145--	
B.	BUTTON, EDIT	KN2147--	
C.	BUTTON, RECORD	KN2144--	
D.	BUTTON, PLAY	KN2142--	
E.	BUTTON, STOP	KN2141--	
F.	BUTTON, F.FWD & RWD	KN2143--	
G.	SWITCH, SELECTOR	KN2184--	
H.	KNOB	KN1108--	
H.	CAP, KNOB	KN1099--	
6.	ESCUTCHEON, SWITCH	PZ4A026-	
7.	ESCUTCHEON, SWITCH	PZ4A027-	
8.	ANGLE	T006704-	
9.	STUD	KZ7B160-	
10.	STUD	KZ7B158-	
11.	STUD	KZ7B159-	
12.	CONNECTOR HOUSING, PLUG	CN402029	
13.	CONNECTOR CONTACT, PLUG	CN7B-041	
14.	CONNECTOR HOUSING, RECEPTACLE	CN402030	
15.	CONNECTOR CONTACT, RECEPTACLE	CN7B-042	

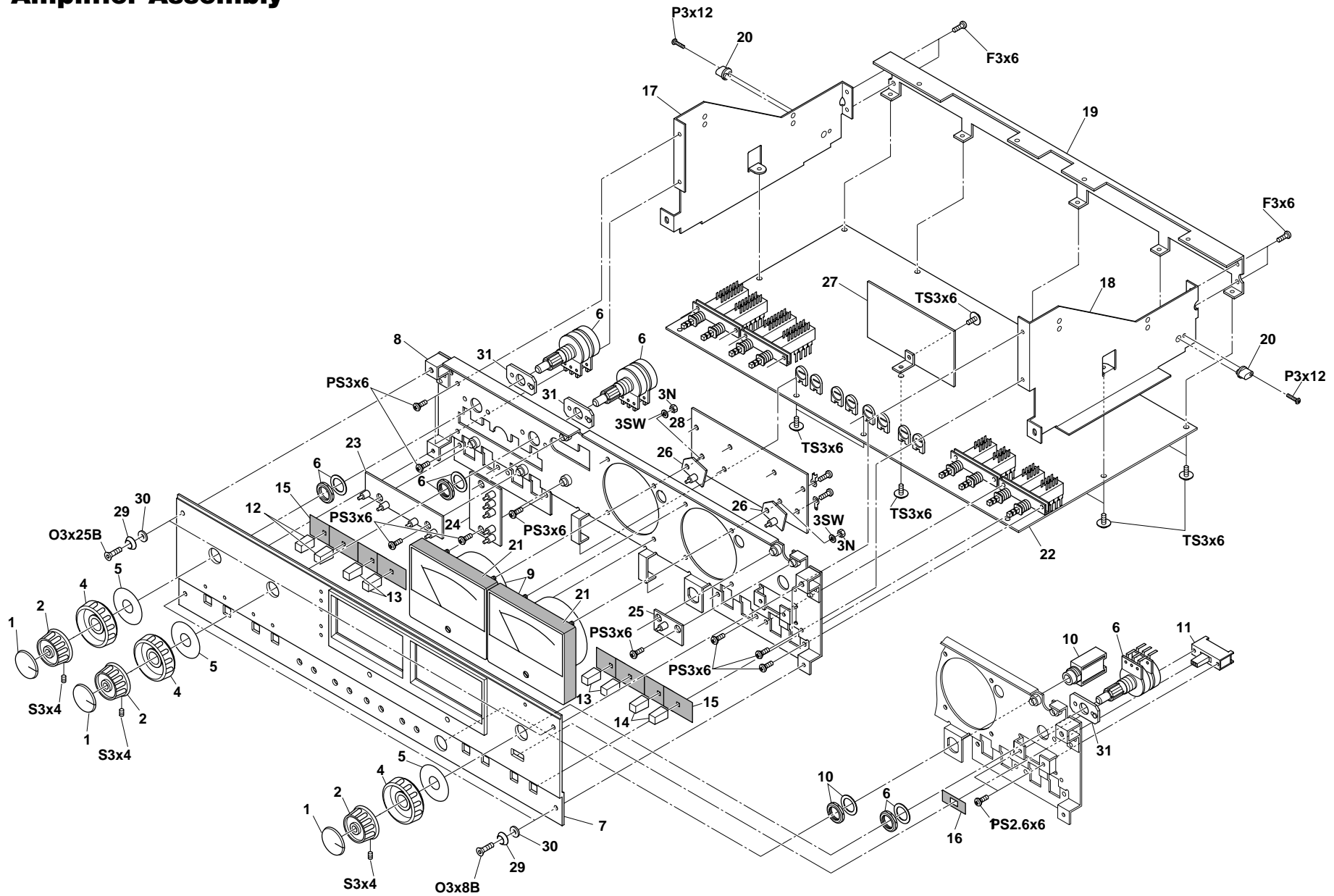
7. Control Assembly



8. Amplifier Assembly

NO.	DESCRIPTION	OTARI PN	NOTES
1.	CAP, KNOB	KN1102--	
2.	KNOB	KN1100A-	
3.	(NOT ASSIGNED)	-----	
4.	KNOB D	KN1063B-	
5.	SPACER	KZ6C017-	
6.	POTENTIOMETER	RV224005	
7.	AMPLIFIER TRIM PANEL ASSEMBLY	A1220-A-	
8.	PANEL, AMP. TOP	A1220-B-	
9.	VU METER	ME11005-	
10.	JACK, PHONE	CN602144	
11.	SWITCH	WH340013	
12.	BUTTON	KN2095--	
13.	BUTTON	KN2094--	
14.	BUTTON	KN2093--	
15.	BLIND	PZ1B012-	
16.	BLIND	PZ1B010-	
17.	FRAME L, AMPLIFIER	A102808-	
18.	FRAME R, AMPLIFIER	A102807-	
19.	BRACKET, PCB	A106206-	
20.	COLLAR	A102809-	
21.	SHIELD, ILLUMINATION	PZ1B013-	
22.	PCB ASSEMBLY, REC/REP AMPLIFIER	PB-1GYA-	BIII-2
	PCB ASSEMBLY, REC/REP AMPLIFIER	PB-16EJ-	BIII-F
	PCB ASSEMBLY, REC/REP AMPLIFIER	PB-1GYC-	BII-2E
23.	PCB ASSEMBLY, LED	PB-83AB-	
24.	PCB ASSEMBLY, LED	PB-83BB-	
25.	PCB ASSEMBLY, LED	PB-83CAA	
26.	PCB ASSEMBLY, LED	PB-81JB-	
27.	PCB ASSEMBLY, REC EQ	PB-81QA-	
28.	PCB ASSEMBLY, VU METER AMPLIFIER	PB-16DB-	
29.	WASHER, TRIM	KZ6C051-	
30.	WASHER	KZ6C011-	
31.	SPACER	A122004-	

8. Amplifier Assembly



9. Connector Panel Assembly

NO.	DESCRIPTION	OTARI PN	NOTES
1.	PANEL, CONNECTOR	CB79201-	
2.	CONNECTOR, D SUB 37-PIN	CN237367	
3.	TERMINAL, GROUND	CN901040	
4.	SCREW, LOCK	CN7B-212	
5.	AC INLET	CN603012	
6.	CONNECTOR, XL TYPE, MALE	CN103195	
7.	CONNECTOR, XL TYPE, FEMALE	CN103194	

9. Connector Panel Assembly

